

# 2024 Oakland Yacht Club Sunday Brunch Series

## Courses and Marks

January 7 & 21; February 4 & 18; March 3 & 17; April 7

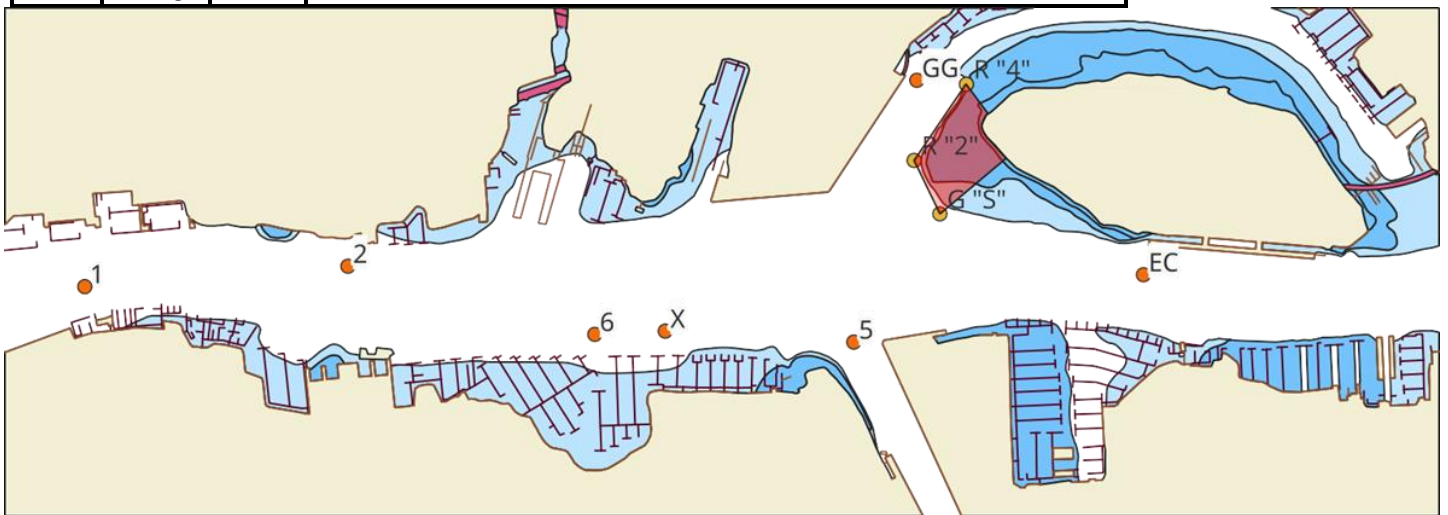
First Warning 1255

**The Start/Finish line:** between an orange panel on the Yacht Club race deck and an orange ball (Mark "X") in the Estuary off docks five and six.

**Restricted Areas: (1) The start/finish line is restricted** and may be crossed only in the act of preparing to start, starting, restarting, finishing, or when "X" is a Mark of the course. **(2) The area northwest of Coast Guard Island** bounded by a line from day mark "S" to R"2" to R"4" and from each end of that line to the nearest point on Coast Guard Island is restricted. See Addendum to Sailing Instructions.

### MARKS:

name	color	shape	description
1	Orange	Ball	Across from the flagpole at Jack London Square
2	Orange	Ball	Oakland side of Estuary approx 200 yards west of Channel 2 Tower
6	Orange	Ball	Approx 200 yards west of X
X	Orange	Ball	Set off the gap between OYC docks 5 and 6
5	Orange	Ball	At Encinal Basin Entrance
GG	Orange	Ball	George Gurrola set In Brooklyn Basin
EC	Orange	Ball	Emile Carles, set SW of Coast Guard Docks



course	start									NM	NM	
										1st Lap	Full course	
1	XS	2S	GGs	5S	XS	2S	ECS	XS		2.18	4.47	
2	XS	2S	ECS	XS	2S	ECS	XS			2.29	4.58	
3	XS	1P	GGs	5S	XS	2S	ECS	XS		2.73	4.43	
4	XS	1P	ECS	XS	1P	ECS	XS			2.82	5.64	
5	XS	1P	ECS	XS	2S	ECS	XS			2.82	5.11	
6	XS	1P	GGs	ECS	XS	2S	ECS	XS		3.18	4.88	
7	XS	1P	6P	2S	GGs	5S	XS	2S	ECS	XS	3.59	5.88
8	XS	1P	6P	2S	ECS	XS	2S	ECS	XS		3.70	5.99
9	XP	ECS	1P	XP	ECS	2P	XP			2.82	5.11	